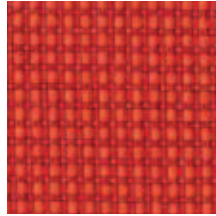


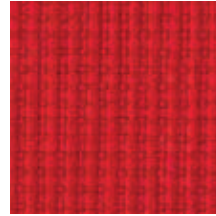
Relax : A

Zusammensetzung: 100% Trevira CS® (Polyester)
 Gewicht: ca. 450g/m, Breite: 140cm
 Lichtechtheit: Note 6 (EN ISO 105-B02)
 Pilling: Note 5 (EN ISO 12945/2)
 Reibechtheit: nass: 4-5 / trocken: 4-5 (EN ISO 105-X12)
 Scheuerfestigkeit: 100.000 Touren
 (Martindale; EN ISO 12947)
 Brandverhalten: DIN EN 1021: Teil 1/2,
 DIN 4102 B1, NF-P 92-503/504 M1

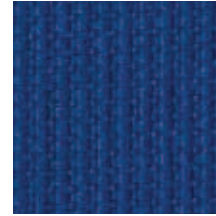
Composition: 100% Trevira CS® (Polyester)
 Weight: approx. 450g/m, Width: 140cm
 Light fastness: value 6 (EN ISO 105-B02)
 Pilling: value 5 (EN ISO 12945/2)
 Fastness to rubbing: wet: 4-5 / dry: 4-5 (EN ISO 105-X12)
 Abrasion resistance: 100,000 rubs
 (Martindale, EN ISO 12947)
 Flammability: DIN EN 1021: Part 1/2,
 DIN 4102 B1, NF-P 92-503/504 M1



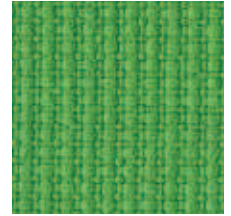
2711 Sunflower



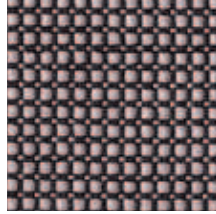
2710 Cherry



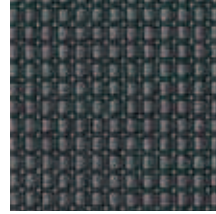
2720 Butterfly



2730 Nature



2702 Piano



2701 Granite



2700 Nighttime

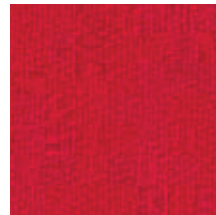
King : A

Zusammensetzung: 100% Trevira CS® (Polyester)
 Gewicht: ca. 420g/m
 Breite: 140cm
 Lichtechtheit: 6 Note (EN ISO 105-B02)
 Reibechtheit: nass: 4-5 / trocken: 4-5
 Scheuerfestigkeit: 100.000 Touren
 (Martindale; EN ISO 12947)
 Brandverhalten: DIN EN 1021: Teil 1/2,
 DIN 4102 B1, NF-P 92-503/504 M1

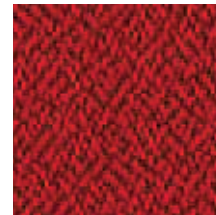
Composition: 100% Trevira CS® (Polyester)
 Weight: approx. 420g/m
 Width: 140cm
 Light fastness: value 6 (EN ISO 105-B02)
 Fastness to rubbing: wet: 4-5 / dry: 4-5
 Abrasion resistance: 100,000 rubs
 (Martindale; EN ISO 12947)
 Flammability: DIN EN 1021: Part 1/2,
 DIN 4102 B1, NF-P 92-503/504 M1



2311 Balbi



0235 Etna



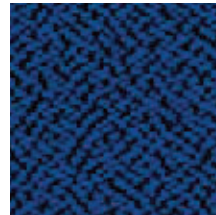
0265 Vesuv



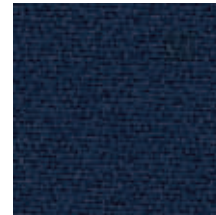
0268 Nil



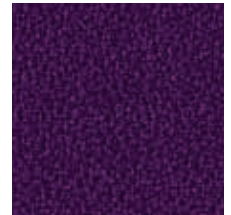
0232 Aquilia



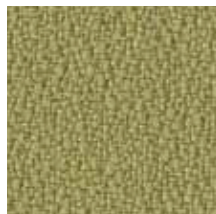
0231 Spika



0266 Tigris



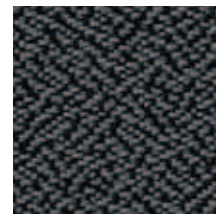
2313 Firenze



2331 Riva



0234 Goya



0237 Dema

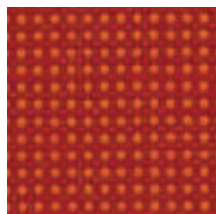


0238 Nigra

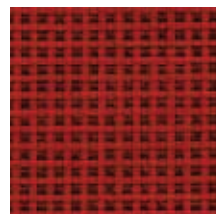
King Plus : A

Zusammensetzung: 100% Trevira CS® (Polyester)
 Gewicht: ca. 365g/m, Breite: 140cm
 Lichtechtheit: Note 6 (EN ISO 105-B02)
 Reibechtheit: nass: 4-5 / trocken: 4-5
 Scheuerfestigkeit: 80.000 Touren
 (Martindale; EN ISO 12947)
 Brandverhalten: DIN EN 1021: Teil 1/2,
 DIN 4102 B1, NF-P 92-503/504 M1

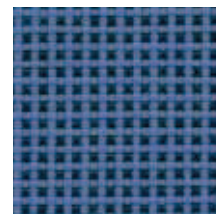
Composition: 100% Trevira CS® (Polyester)
 Weight: approx. 365g/m, Width: 140cm
 Light fastness: value 6 (ISO 105-B02)
 Fastness to rubbing: wet: 4-5 / dry: 4-5
 Abrasion resistance: 80,000 rubs
 (Martindale; EN ISO 12947)
 Flammability: DIN EN 1021: Part 1/2,
 DIN 4102 B1, NF-P 92-503/504 M1



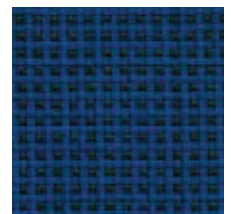
2611 Lava



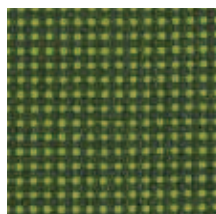
2610 Fire



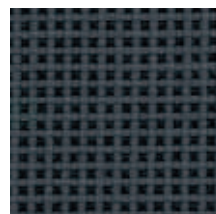
2621 Cielo



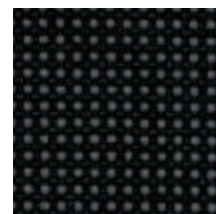
2620 Fjord



2632 Meadow



2601 Dust



2600 Vulcano